

Hyperion SmartControl™



Product Code: SmartControl

The Hyperion™ SmartControl is the latest innovation from Meech. The SmartControl allows the user to remotely monitor and adjust the performance of connected Hyperion equipment, through a mobile phone, tablet or remote desktop.

The ionising equipment's performance is easily tracked by the SmartControl, which uses Meech's Ion Current Monitoring Technology allowing the user to monitor the ionising performance. As well as monitoring, the SmartControl also makes it possible to adjust and control connected ionisers in order to optimise efficiency.

A single SmartControl has the capacity for up to six devices to be connected at a time (additional devices can be connected using an expansion kit). This means that in an application using multiple ionising bars, they can all be monitored and controlled through one SmartControl unit.

SmartControl users will be able to choose between two versions; the Local Area Network (LAN) version or the PLC Connection version. Users can then decide if their SmartControl is Wide Area Network (WAN) enabled or not.

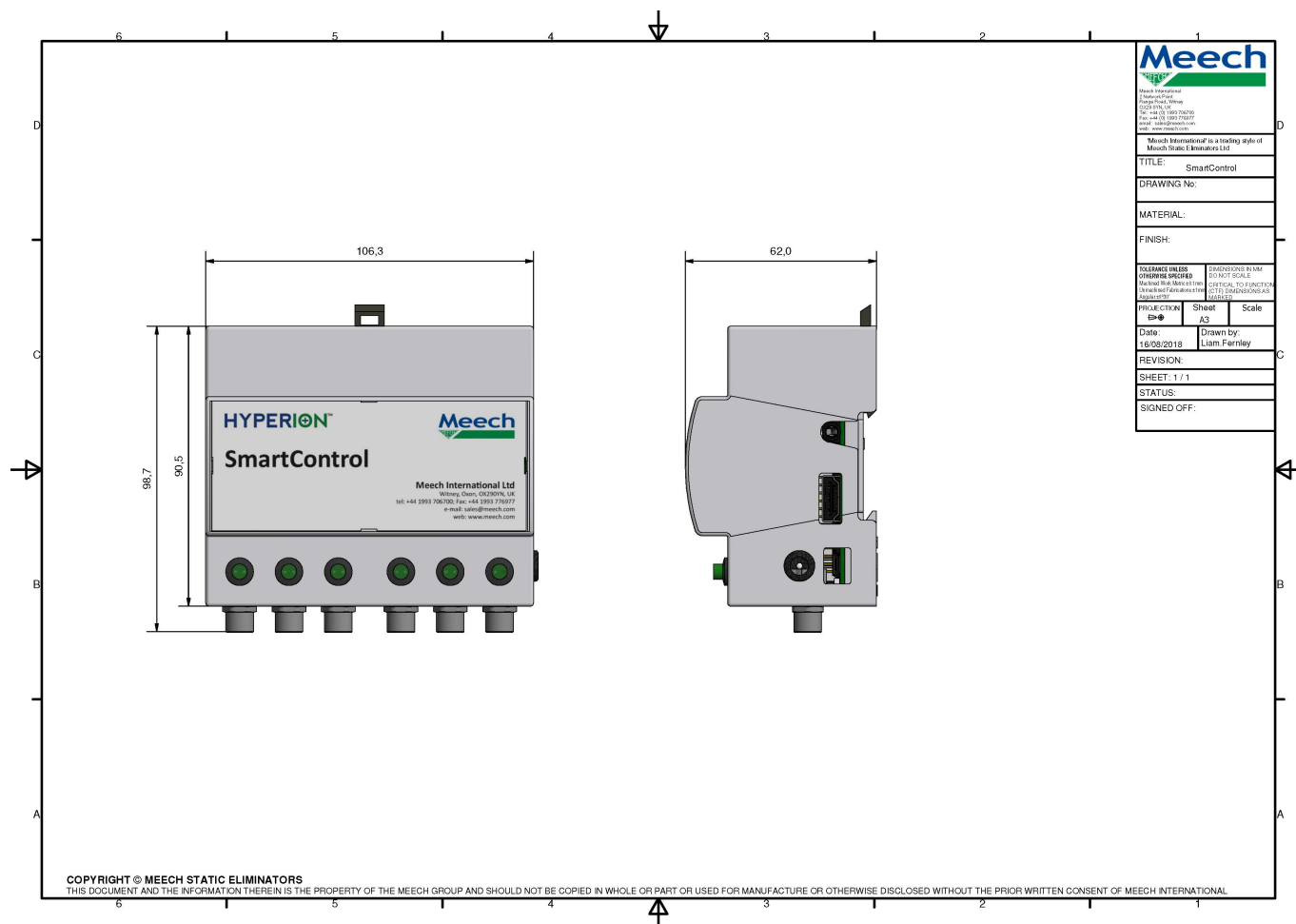
Features

Benefits

Remote control and monitoring	Make quick and easy changes to connected devices
Compatible with mobile devices	Allowing control, wherever you are
PLC Integration	Compatible with Siemens and Modbus software
Plug-and-Play	Fast and easy installation into current operations for immediate effect
User-Friendly Interface	Clear and easy to use, with no need for training
Multiple connections	Only one SmartControl is needed for the central control of six Hyperion devices
Option of additional connections	More devices can be added via expansion units (coming soon)
Feedback sensor compatible	For more accurate neutralisation of all charges on the material (coming soon)
Choice of two configurations	Two configurations available: a single unit or an enclosed SmartControl and touchscreen system (touchscreen version coming soon)
Fast, accessible monitoring	Increased productivity and quality control on production lines

Technical Characteristics

Dimensions (W x H x D)	106mm x 62mm x 90mm
Weight	Approx. 230g
Construction	ABS, Polycarbonate
Input Voltage	24V DC
Device Connections	6 x M8 Murr
Connectivity	USB, HDMI, LAN
Mounting	DIN rail
Environmental Protection	IP20



Product shown in this document may be covered by one or more patents, patents applied for and/or registered designs and/or trade marks. For further information please refer to our Head Office or visit www.meech.com.